

ANTARCTICA & sub-Antarctic Islands including South Georgia 2024-25



- **ITINERARIES – 2024-25 season**
Classic Antarctica | Weddell Sea Quest | Polar Circle Quest | Classic South Georgia
- **THE USHUAIA**
- **DATES & RATES – 2024-25 season**
- **TERMS & CONDITIONS**

Antarply Expeditions

Gobernador Paz 633 – 1st Floor
9410 Ushuaia, Tierra del Fuego, Argentina.

Phone: +54 (2901) 433636/436747

Fax: +54 (2901) 437728

Email: info@antarply.com

Web: www.antarply.com

Facebook: <http://www.facebook.com/antarcticexpeditions>

CLASSIC ANTARCTICA

Expedition cruise to the Antarctic Peninsula & South Shetland Islands aboard the USHUAIA

DAY 1: Depart from Ushuaia

Embark the USHUAIA in the afternoon and meet your expedition and lecture staff. After you have settled into your cabins we sail along the famous Beagle Channel and the scenic Mackinlay Pass.

DAY 2 & 3: Crossing the Drake Passage

Named after the renowned explorer, Sir Francis Drake, who sailed these waters in 1578, the Drake Passage also marks the Antarctic Convergence, a biological barrier where cold polar water sinks beneath the warmer northern waters. This creates a great upwelling of nutrients, which sustains the biodiversity of this region. The Drake Passage also marks the northern limit of many Antarctic seabirds. As we sail across the passage, Antarply Expeditions' lecturers will be out with you on deck to help in the identification of an amazing variety of seabirds, including many albatrosses, which follow in our wake. The USHUAIA's open bridge policy allows you to join our officers on the bridge and learn about navigation, watch for whales, and enjoy the view. A full program of lectures will be offered as well.



The first sightings of icebergs and snow-capped mountains indicate that we have reached the South Shetland Islands, a group of twenty islands and islets first sighted in February 1819 by Capt. William Smith of the brig *Williams*. With favorable conditions in the Drake Passage our lecturers and naturalists will accompany you ashore as you experience your first encounter with the penguins and seals on Day 3.

DAY 4 to 7: Exploring the Antarctic Peninsula and South Shetland Islands



The South Shetland Islands are a haven for wildlife. Vast penguin rookeries, beaches ruled by Antarctic fur seals and Southern elephant seals make every day spent in this amazing island group unforgettable. Sailing through the narrow passage into the flooded caldera of Deception Island is breathtaking.

King George Island, the largest of the South Shetland Islands, features colonies of nesting Gentoo and Chinstrap Penguins, Kelp Gulls, Blue-eyed Cormorants, Antarctic Terns and Southern Giant Petrels and is home to scientific bases of many different countries. Chinstrap and Gentoo Penguins as well as elephant seals await you at Livingston Island.

The Antarctic Peninsula's remarkable history will provide you with a type of excitement often only associated with the early explorers. You will have plenty of time to explore its amazing scenery, a pristine wilderness of snow, ice, mountains and waterways, and an incredible wide variety of wildlife. Apart from penguins and seabirds you are very likely to see Weddell, crabeater and leopard seals as well as Minke, killer (orca) and humpback whales at close range.

We hope to navigate some of the most beautiful waterways (depending on the ice conditions): the Gerlache Strait, the Neumayer Channel, and the Lemaire Channel, the latter are narrow passages between towering rock faces and spectacular glaciers. We plan to make at least two landings per day and possible landing sites may include:

Paradise Bay is perhaps the most aptly named place in the world and we attempt a landing on the continent proper. After negotiating the iceberg-strewn waters of the Antarctic Sound, we hope to visit the bustling Adélie Penguin (over 100,000 pairs breed here) and Blue-eyed Cormorant colonies on Paulet Island. The Nordenskjöld expedition built a stone survival hut here in 1903. Today its ruins have been taken over by nesting penguins.

Further exploration may take you to the Melchior Island group, Cuverville Island, Portal Point, Neko Harbour, Pléneau Island and if ice conditions permit, to Petermann Island for a visit to the southernmost colony of Gentoo Penguins.



DAY 8 & 9: At Sea crossing the Drake Passage, northbound

We leave Antarctica and head north across the Drake Passage. Join our lecturers and naturalists on deck as we search for seabirds and whales and enjoy some final lectures. Take the chance to relax and reflect on the fascinating adventures of the past days on the way back to Ushuaia.



DAY 10: Arrival in Ushuaia

We arrive at the port of Ushuaia in the early morning and disembark the USHUAIA after breakfast.

Please note: The above itinerary is a guide only. Our exact route and program will vary to take best advantage of local weather and ice conditions and opportunities to view wildlife. Changes will be made by the Captain and/or Expedition Leader to facilitate the best results from the prevailing conditions. A daily program sheet will be issued on board. Flexibility is the key to success.

The itineraries for A121124, A101224, A291224, A080125 and A260225 will offer an extra day in the area of the Antarctic Peninsula and South Shetland Islands.



POLAR CIRCLE QUEST

Expedition cruise **AI 50225** to the Antarctic Peninsula, South Shetland Islands & endeavor to cross the Polar Circle aboard the **USHUAIA**

FEBRUARY 15: Depart from Ushuaia

Embark the USHUAIA in the afternoon and meet your expedition and lecture staff. After you have settled into your cabins we sail along the famous Beagle Channel and the scenic Mackinlay Pass.

FEBRUARY 16 & 17: At Sea – Crossing the Drake Passage

Named after the renowned explorer, Sir Francis Drake, who sailed these waters in 1578, the Drake Passage also marks the Antarctic Convergence, a biological barrier where cold polar water sinks beneath the warmer northern waters. This creates a great upwelling of nutrients, which sustains the biodiversity of this region.

The Drake Passage also marks the northern limit of many Antarctic seabirds. As we sail across the passage, Antarpply Expeditions' lecturers will be out with you on deck to help with the identification of an amazing variety of seabirds, including many albatrosses, which follow in our wake.

The USHUAIA's open bridge policy allows you to join our officers on the bridge and learn about navigation, watch for whales, and enjoy the view. A full program of lectures will be offered as well.

The first sightings of icebergs and snow-capped mountains indicate that we have reached the South Shetland Islands, a group of twenty islands and islets first sighted in February 1819 by Capt. William Smith of the brig *Williams*. With favorable conditions in the Drake Passage our lecturers and naturalists will accompany you ashore as you experience your first encounter with the penguins and seals on Day 3.



FEBRUARY 18 to 23: Exploring the Antarctic Peninsula, the South Shetland Islands, and endeavor to cross the Polar Circle



Exquisite beauty and pristine landscapes are waiting for you on the western side of the Antarctic Peninsula. Myriads of icebergs with different shades and shapes are floating free in the waterways around the continent. The Antarctic Peninsula's remarkable history will also provide you with a type of excitement often only associated with the early explorers. You will have plenty of time to explore its amazing scenery and a wide variety of wildlife. Apart from Adélie, Gentoo and Chinstrap Penguins and other seabirds you are likely to encounter Weddell, crabeater, fur and leopard seals as well as Minke whales and orcas at close range. At this time of year it is also very likely to encounter big cetaceans, such as humpback, Fin and Sei whales in the area.



Station Vernadsky, the former British base Faraday, where the ozone hole was first spotted, the rugged Yalour Islands and south of the Polar Circle Detaille Island.

On our way North we plan to explore the South Shetland Islands. The volcanic island group is a haven for wildlife. Vast penguin rookeries and seals hauling out on the shorelines make every day spent here unforgettable. Sailing through the narrow passage into the flooded caldera of Deception Island is truly amazing, so is visiting the crescent-shaped island Half Moon, home to Chinstrap Penguins in breathtaking surroundings.

FEBRUARY 24 & 25: At Sea – Crossing the Drake Passage, northbound

We leave Antarctica and head north across the Drake Passage. Join our lecturers and naturalists on deck as we search for seabirds and whales and enjoy some final lectures. Take the chance to relax and reflect on the fascinating adventures of the past days on the way back to Ushuaia.

FEBRUARY 26: Arrival in Ushuaia

We arrive at the port of Ushuaia in the early morning and disembark the USHUAIA after breakfast.



Please note: The above itinerary is a guide only. Our exact route and program will vary to take best advantage of local weather and ice conditions and opportunities to view wildlife. Changes will be made by the Captain and/or Expedition Leader to facilitate the best results from the prevailing conditions and they will try their best to reach the Polar Circle. However if ice conditions do not allow access the route might be changed. A daily program sheet will be issued on board. Flexibility is the key to success.



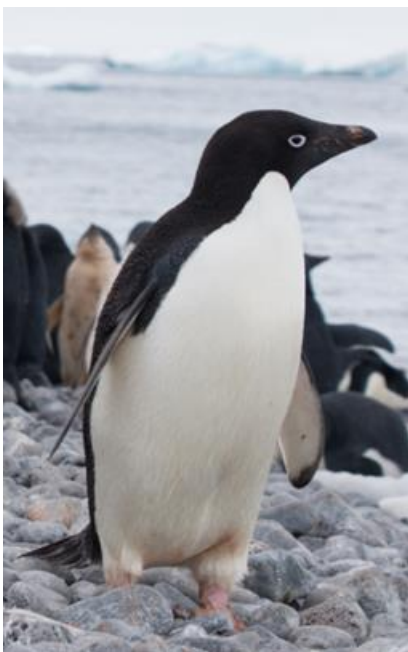
WEDDELL SEA QUEST

Expedition cruise **A050225** to the Antarctic Peninsula, South Shetland Islands & the Weddell Sea
Aboard the **USHUAIA**

The Weddell Sea will always be remembered as the polar region that still echoes the ill-fated expedition of the great British polar explorer Sir Ernest Shackleton. After Amundsen and Scott had reached the South Pole, Shackleton planned the Imperial Trans Antarctic Expedition to make the first crossing of Antarctica, from the Weddell Sea to the Ross Sea via the South Pole. The 1914 expedition was a failure but it produced one of the greatest stories in the history of polar exploration. His ship, the *Endurance* was beset in the ice almost in sight of her destination, Vahsel Bay, and after drifting northwards, eventually sank. The crew camped out on the pack-ice and slowly made its way to Elephant Island in the South Shetland Islands and, as there was no hope of rescue, Shackleton determined to go for help. He decided to head for South Georgia. Shackleton and five companions set out in one of the lifeboats across 1,300 km (800 miles) of the stormiest water in the world. Sixteen days later, worn out, soaked and hungry they sighted the southern coast of South Georgia. But they still had to cross the interior of the island, as the whaling stations were all situated on the northern coast.



The interior of South Georgia had never been surveyed and they had to guess their route, but after a difficult march they finally found their way to the whaling station Stromness, where they did get help. However, it would take them another three attempts to get back to Elephant Island before the 22 marooned men of the *Endurance* were rescued. Through Shackleton's outstanding courage and leadership his men survived.



FEBRUARY 05: Depart from Ushuaia

Embark the USHUAIA in the afternoon and meet your expedition and lecture staff. After you have settled into your cabins we sail along the famous Beagle Channel and the scenic Mackinlay Pass.

FEBRUARY 06 & 07: At Sea – Crossing the Drake Passage

Named after the renowned explorer, Sir Francis Drake, who sailed these waters in 1578, the Drake Passage also marks the Antarctic Convergence, a biological barrier where cold polar water sinks beneath the warmer northern waters. This creates a great upwelling of nutrients, which sustains the biodiversity of this region. The Drake Passage also marks the northern limit of many Antarctic seabirds. As we sail across the passage, Antarply Expeditions' lecturers will be out with you on deck to help with the identification of an amazing variety of seabirds, including many albatrosses, which follow in our wake. The USHUAIA's open bridge policy allows you to join our officers on the bridge and learn about navigation, watch for whales, and enjoy the view. A full program of lectures will be offered as well.

The first sightings of icebergs and snow-capped mountains indicate that we have reached the South Shetland Islands, a group of twenty islands and islets first sighted in February 1819 by Capt. William Smith of the brig *Williams*.

With favorable conditions in the Drake Passage our lecturers and naturalists will accompany you ashore as you experience your first encounter with the penguins and seals on Day 3.

FEBRUARY 08 to 10: Exploring the Weddell Sea

This is where huge tabular icebergs roam. In some years, the Erebus & Terror Gulf and Weddell Sea are chock-a-block full with ice, making for exciting ice navigation. Get up early and go out on deck. It may be 3:30 h in the morning, but the sunrises will be unlike anything you've ever seen. Huge tabular bergs break from the Larsen, Ronne, and Filchner ice shelves and combine with one-year-old and multi-year sea ice to produce a floating, undulating panorama of rugged ice scenery. All-white Snow Petrels are likely to be coursing over the floes, often joined by Pintado Petrels.

The usual passage to the east side of the Antarctic Peninsula traverses the Antarctic Sound, which is 30 miles (48 km) long and 7-12 miles (11-19 km) wide and runs northwest-to-southeast. Hope Bay and the Argentine Station Esperanza, are located on the western side of the Sound. Brown Bluff, a promontory on the Tabarin Peninsula, is located south of Hope Bay. Both of them might be possible landing sites. The Weddell Sea represents the center of the Peninsula's Adélie Penguin population. Devil Island, Paulet Island and the already mentioned sites, might give us ample proof of this. The numbers of penguins are breathtaking. Sometimes juvenile Emperor Penguins have been sighted, riding ice floes but are by no means regular in the area.



This region also teems with vibrant exploration history. The most bizarre of these tales involves the Swedish Antarctic Expedition of 1901-03 under the command of geologist Otto Nordenskjöld. Four visitor sites have links to this expedition: Hope Bay, Paulet Island, Snow Hill Island, and Cape Well-Met on Vega Island. Our expedition staff will be pleased to share their exciting story with you. Nordenskjöld's expedition was the first to overwinter in the Peninsula. His ship the *Antarctic*, under the command of the famous Norwegian whaling captain Carl Anton Larsen, was trapped in the ice and sank, but the men survived on different locations and even managed to carry out significant scientific research in the area.

FEBRUARY 11 & 12: Exploring the Antarctic Peninsula and South Shetland Islands

The Antarctic Peninsula's remarkable history will also provide you with a type of excitement often only associated with the early explorers. You will have plenty of time to explore its amazing scenery, a pristine wilderness of snow, ice, mountains and waterways and a wide variety of wildlife. Apart from Gentoo and Chinstrap Penguins and other seabirds you are likely to encounter Weddell, crabeater and leopard seals as well as Minke whales and orcas at close range.

We hope to navigate some of the most beautiful waterways: the Gerlache Strait, Errera Channel and Neumayer Channel. Possible landing sites may include: Paradise Bay, which is perhaps the most aptly named place in the world with its impressive glacial fronts and mountains, Cuverville Island, home of the biggest Gentoo Penguin colony in the Peninsula surrounded by glaciers and castellated icebergs, and the British Museum and Post office at Port Lockroy.

Further exploration will lead us to the South Shetland Islands. The volcanic island group is a haven for wildlife. Vast penguin rookeries and seals hauling out on the shorelines make every day spent here unforgettable.



We plan to sail through the narrow passage into the flooded caldera of Deception Island - the largest of three recent volcanic centers in the South Shetlands- which is truly amazing. Once inside, the rising slope of the black, cinder-covered volcanic rim can be walked uphill to a rather spectacular vantage point. We also aim to visit the crescent-shaped island Half Moon, home to Chinstrap Penguins in breathtaking surroundings, in the entrance of Moon Bay between Greenwich and Livingston Islands.



FEBRUARY 13 & 14 At Sea – Crossing the Drake Passage, northbound

We leave Antarctica and head north across the Drake Passage. Join our lecturers and naturalists on deck as we search for seabirds and whales and enjoy some final lectures. Take the chance to relax and reflect on the fascinating adventures of the past days on the way back to Ushuaia.

FEBRUARY 15: Arrival in Ushuaia

We arrive at the port of Ushuaia in the early morning and disembark the USHUAIA after breakfast.

Please note: The above itinerary is a guide only. Our exact route and program will vary to take best advantage of local weather and ice conditions and opportunities to view wildlife. Changes will be made by the Captain and/or Expedition Leader to facilitate the best results from the prevailing conditions and they will try their best to reach the Weddell Sea. However if ice conditions do not allow access the route might be changed to West Antarctica. A daily program sheet will be issued on board. Flexibility is the key to success.



CLASSIC SOUTH GEORGIA

Expedition cruise **A131024** to the Falkland Islands (Malvinas), South Georgia, Antarctic Peninsula & South Shetland Islands

Aboard the **USHUAIA**

South Georgia offers a spectacular scenery, outstanding wildlife, history of human endeavor and is at the same time such a remote island group, that a visit turns into a real privilege.

It is easy to think "small" with islands, but South Georgia is something very different. The mountain ranges offer a beguiling landscape. There are sheltered valleys with meltwater streams, tussac grass covered moraines with close-up wildlife. Glaciers cover the mountains and even huge tabular icebergs from the shelves of the far south thump along South Georgia's weather shore to become features of its great landscape. Come and join us to explore all the facets South Georgia has to offer.

In spring one of the highlights is certainly watching elephant seals giving birth on the beaches of South Georgia. In October, we will not only witness these touching moments but also be able to observe, how the cows get to know their pups by vocalization and checking out their particular scent by caressing and sniffing them for up to 30 minutes before nurturing them for the first time. Big elephant seal bulls will be most active defending their harems. There will be bull fighting on the beaches and breathtaking moments are almost guaranteed.



King Penguins are of course also around. As this species has an odd breeding cycle of 14 months, there are always huge groups of King Penguins involved in the breeding process no matter when one arrives at South Georgia. With a little luck we will be spotting the first Macaroni Penguins arriving at South Georgia. Red eyes and golden crests make these little, 28-inch birds quite spectacular. Their efforts at leaping out of angry seas onto slippery, rocky ledges and then climbing high up a dauntingly steep hillside with stumpy bright pink legs will fill us with admiration for their tenacity.



Black-browed Albatross, Grey-headed and Light-mantled Sooty Albatross are also tending to their nests. The Wandering Albatross has been breeding since the previous year, so the chicks are sitting on the nest and waiting for their parents to come in and feed them. The most important breeding site for Wandering Albatross, Prion Island, will be hopefully open for visitation at this time of year.

OCTOBER 13: Ushuaia

In the afternoon we will board the USHUAIA. A welcome drink and then an introduction to the crew and expedition staff will follow, and we will have time to get to know our new shipmates. The ship will then set sail towards the Western Falkland Islands (Malvinas), known for their rugged beauty and wealth of seabirds and waterfowl.

OCTOBER 14: At Sea

The open bridge policy on the USHUAIA allows us to join the officers on the bridge and learn about navigation, watch for marine life, and enjoy the views of the open ocean. These waters are also home to an interesting group of seabirds, which often ride the currents created in the wake of the ship, such as albatrosses and petrels. Join the expedition staff and naturalists on deck whilst we are at sea as we search for seabirds and other local wildlife, such as orcas and dolphins. An interesting selection of lectures will help us to prepare for our first excursions in the Falkland Islands (Malvinas).

OCTOBER 15: Western Falkland Islands (Malvinas)

With favorable conditions, our lecturers and naturalists will accompany you on your first excursion on October 15, 2024.

On the western coast we might visit the following islands:



West Point Island

West Point Island lies off the most north-westerly point of mainland West Falkland (Malvinas). The attractive settlement sits on the edge of a small harbor on the eastern side of the Island, in the lee of Black Bog Hill and Michael's Mount. The valley between these two peaks rolls over the center of the island to the dramatic Devil's Nose, one of the Island's main attractions. From here visitors are treated to splendid views of Cliff Mountain, the Island's highest point at 1,250 ft (381 m), and the highest cliffs in the Falklands (Malvinas). This is where we will encounter a vast colony of Rockhopper Penguins and Black-browed Albatrosses, nesting together in close vicinity.

Carcass Island

Carcass Island lies to the north-west of the Falklands archipelago (Malvinas). A mature tussock plantation covers much of the lower ground below Jason Hill to the east. The availability of abundant cover and the absence of cats, rats and mice throughout the island have made for a spectacularly large population of small birds, which is one of Carcass Island's most delightful features. Gentoo and Magellanic Penguins do also nest here. Peale's and Commerson's dolphins come frequently close to the shoreline to get a glimpse of the visitors as well. At the settlement with its beautiful gardens, we are invited to enjoy tea and cookies with the locals.

Overnight we will sail around the northern islands of the archipelago in easterly direction to reach the capital, Stanley, in the following morning.

OCTOBER 16: Eastern Falkland Islands (Malvinas) - At Sea

In the morning hours we will have time to explore the quaint little town of Stanley and its wonderful Museum, souvenir shops and pubs. The town was established in the early 1840's. Isolation and the weather conditions made life hard, but progress was gradual and punctuated by the extremely eventful times of involvement in two world wars.

For those who are more interested in the outstanding wildlife the Islands have to offer, you do not even have to leave town to enjoy it. Southern Giant Petrels often fly close to the shoreline. The endemic Falkland Steamer Ducks abound on the shorelines while Kelp Gulls can often be seen flying together with Dolphin Gulls. The less obvious but frequent visitors to Stanley area are Black-crowned Night Herons, Red-backed Hawks and Peregrine Falcons. Turkey Vultures are regularly seen on top of any prominent building. Many pairs of Upland Geese frequent the park and it might be nice to take a stroll around the gardens of town to see some of the singing birds as well.

In the afternoon it is time to set sail, heading for South Georgia.





OCTOBER 17 & 18: At Sea

An extensive lecture program will be offered during the days at sea. Expert naturalists share their knowledge of the wildlife and unique ecosystems we will encounter throughout our voyage. South Georgia is widely regarded as one of the most beautiful and inspiring places on earth with more wildlife than virtually anywhere else on the planet.

OCTOBER 19: At Sea - South Georgia

South Georgia will come in sight! Though extremely isolated, it has amazing scenery ranging from high mountains and mighty glaciers to deep fjords and low-lying grassland. If the weather is favorable, we would aim to visit one of the following sites in the late afternoon:

Elsehul

Situated at the northwestern extremity of South Georgia on the eastern side of the knife-edged summit ridges of Parydian Peninsula, Elsehul is a beautiful little harbor. It is the only visitor site on the island, where colonies of Black-browed and Grey-headed Albatrosses can be viewed from zodiacs within the protection of sheltered inshore waters.

Right Whale Bay

Right Whale Bay is a bay 1.5 miles (2.4 km) wide, entered between Craigie Point and Nameless Point along the north coast of South Georgia. The name dates back to at least 1922, when South Georgia was still a center for commercial whaling. Today we hope to encounter a small colony of King Penguins, along with Giant Petrels, gulls and breeding fur seals on the black ash beach.

OCTOBER 20 to 24: South Georgia

Our exact itinerary will depend on local land and sea conditions but the following destinations are among those that we would like to explore:

Salisbury Plain

Sometimes called the "Serengeti of the South", Salisbury Plain is a wildlife site without parallel. Several large glaciers provide a dramatic backdrop for the tens of thousands of King Penguins that nest in the tussock grass of this remarkable ecosystem. The wide beach makes for excellent walking as we visit the colony, where we are literally surrounded and delightfully outnumbered by throngs of curious, gentle penguins. Elephant seals also abound, as well as Southern Giant Petrels and the occasional wandering Gentoo Penguin. Prepare for an awe-inspiring experience.

Prion Island

Prion Island is a beautiful tussock-grass covered islet. If we are lucky we will get the opportunity to see a breeding colony of Wandering Albatross on top of it. We will climb to the summit on a wooden boardwalk, which takes us close to their nests and offers comfortable viewing platforms.

Grytviken

Grytviken lies within King Edward Cove, a sheltered harbor tucked between Hope Point and Hobart Rock on the western shore of Cumberland East Bay. The rusting ruins of the Grytviken whaling station are situated on a level plain at the head of the cove, backed by steep hills and mountains. Now the site of the South Georgia Museum, the station remains a focal point of interest for many visitors, as does Sir Ernest Shackleton's grave in the nearby whaler's cemetery and his memorial cross on Hope Point. The scenery in this area is exceptionally beautiful even by South Georgia standards: the glaciers and snow covered peaks of the Allardyce Range – Mt. Sugartop, Mt. Paget, Mt. Roots, Nordenskjöld Peak, Mt. Kling and Mt. Brooker – form a magnificent backdrop to the cove, and the views from King Edward Point in particular, must be among the finest on earth.





Godthul

Situated 9km east of Cumberland East Bay on the eastern shores of Barff Peninsula, Godthul is a 3km long inlet that lies between Cape George and Long Point. Gentoo Penguins are abundant on the tussac plateau and Light-mantled Sooty Albatrosses echo off the natural cliff amphitheater that encircles the harbor. A floating factory ship serviced by two whale catchers was stationed here each summer between 1908 and 1929. A small shore depot supporting the whaling operations was established close by the stream in the southeast corner of the harbor, and the rusting barrels, wooden shed and boats are fascinating relics of the whaling era, as is the impressive collection of whale and elephant seal bones scattered along the beach.

St Andrews Bay

The surf beaten coastline at St. Andrews Bay runs north-south in a 1.86 mile (3 km) long uninterrupted sweep of fine dark sand, covered in penguins and seals and bounded in the interior by the Cook, Buxton and Heaney Glaciers. The bay hosts the biggest colony of King Penguins on South Georgia. Now in spring time, the beach is also carpeted with elephant seals. Such a large assemblage of wildlife attracts an entourage of persistent and voracious scavengers. Sheathbills dart in and around the penguin colony. Cape Petrels nest in a small number on the cliffs north of St. Andrews Bay. Leopard seals patrol the rocks at this end of the beach too, hunting for penguins along the edge of kelp beds. A few White-chinned Petrels and Light-mantled Sooty Albatrosses nest on the tussac slopes. Brown Skuas and Antarctic Terns breed on the outwash plain and scree slopes at the north end of the beach, defending their nest sites with their characteristic noise and vigor.

Cooper Bay

Cooper Bay is found at the southeast extremity of South Georgia. There is a wealth of wildlife at this site, in a spectacular setting. Fascinating volcanic rocks tower over small fjords, giving a stunning invitation for a thrilling zodiac cruise to observe wildlife from the waterfront. Watch out for Chinstrap and Macaroni Penguins.

Drygalski Fjord

Drygalski Fjord is also located in the far south east of the island. The glaciers found in this dramatic fjord have retreated significantly in recent decades, but they still remain one of the most striking features of this coastline, particularly the Risting and Jenkins Glaciers. With a little luck, we might see the glaciers calve and witness the birth of a new iceberg from on board the ship.



OCTOBER 25 & 26: At Sea

We spend the next two days crossing the Scotia Sea towards the Antarctic Peninsula offering opportunities to be out on deck, catch up on some reading, check through and edit our photos, or simply reflect on the magical experiences of the last days on South Georgia. Lectures and other activities will be offered throughout these days.

OCTOBER 27: Elephant Island, South Shetland Islands

We hope to have a chance to visit the enigmatic Elephant Island. Sir Ernest Shackleton fans will need no introduction to this historic windswept island. In 1916 Shackleton was forced to leave 22 of his men stranded on these shores, while he and five others embarked on an unbelievable last-ditch rescue attempt. What followed is one of the greatest rescue stories of all time.

Every passenger will return with a greater knowledge of this gripping tale of adventure in a truly remarkable part of the world.

OCTOBER 28: At Sea - Antarctic Peninsula: Antarctic Sound

Our expedition team will prepare you for our experience in the Antarctic Peninsula and South Shetland Islands.



Later today, we hope to arrive at the Antarctic Peninsula in the area of the scenic Antarctic Sound. Here we will try to land at one of the following landing sites:

Argentine Antarctic Station Esperanza

We will try to sail the passage to the east side of the Antarctic Peninsula, which traverses the Antarctic Sound and runs northwest-to-southeast. Hope Bay and the Argentine Station Esperanza are located on the western side of the Sound.

Brown Bluff

Brown Bluff, a promontory on the Tabarin Peninsula, is located south of Hope Bay. Both of them might be possible landing sites. The Weddell Sea represents the center of the Peninsula's Adélie Penguin population.

OCTOBER 29 to 31: Antarctic Peninsula and South Shetland Islands

Our expedition team will prepare you for our experience in the Antarctic Peninsula and South Shetland Islands.

Gerlache Strait

This region of broad straits, mountainous islands, protected bays, and narrow channels offer moments of solitude. A profusion of tall peaks humans have never climbed and vast glaciers flowing inexorably seaward are the physical features here.

Hydrurga Rocks

We might visit Hydrurga Rocks, a small group of islets, which lie east of Two Hummock Island in the Palmer Archipelago, at the northern entrance of the Gerlache Strait. Chinstrap Penguins, Blue-eyed Shags and Kelp Gulls are confirmed breeders here.

Cuerville Island

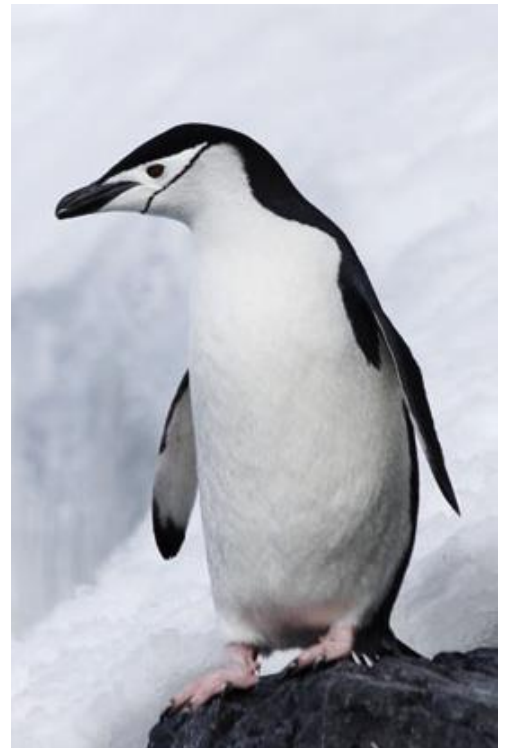
We may also go to Cuerville Island, which lies in the scenic Errera Channel, in the center of the Gerlache Strait. A well-defined raised beach forms a nesting site for many Gentoo Penguins here. On our way north we plan to explore the South Shetland Islands.

Deception Island

We plan to sail through the narrow passage into the flooded caldera of Deception Island - the largest of three recent volcanic centers in the South Shetlands- which is truly amazing. Once inside, the rising slope of the black, cinder-covered volcanic rim can be walked uphill to a rather spectacular vantage point.

Half Moon Island

This crescent-shaped island, in the entrance of Moon Bay between Greenwich and Livingston Islands, is home to Chinstrap Penguins in breathtaking surroundings.



NOVEMBER 01 & 02: At Sea

We leave Antarctica and head north across the Drake Passage. Join our lecturers and naturalists on deck as we search for seabirds and whales. We will also enjoy some final lectures. Take the chance to relax and reflect on the fascinating adventures we have had over the past days.

NOVEMBER 03: Ushuaia

We arrive at the port of Ushuaia in the early morning and disembark the USHUAIA after breakfast.

Please note: *The above itinerary is a guide only. Our exact route and program will vary to take best advantage of local weather and ice conditions and opportunities to view wildlife. Changes will be made by the Captain and/or Expedition Leader to facilitate the best results from the prevailing conditions. A daily program sheet will be issued on board. Flexibility is the key to success.*



**TO BOOK CONTACT ROSEMARY AT
AUSSIENET TRAVEL
PHONE 1300 061 647
EMAIL info@aussienettravel.com**

THE USHUAIA



Originally built for the United States agency NOAA (National Oceanic & Atmospheric Administration), the USHUAIA has been refurbished to accommodate a maximum of 90 passengers in 46 comfortable cabins and suites.

The ice-strengthened polar vessel USHUAIA is very well appointed and provides ample deck space and an open bridge policy. The full complement of inflatable landing craft ensures superb landings and wildlife viewing opportunities on the otherwise inaccessible coastline.

All cabins include ample storage space. Public areas feature a large dining room (one sitting), an open-plan observation lounge / lecture room with modern multimedia equipment, bar and a well-stocked library. There is also a small infirmary.

Our expert captain, officers and crew are highly experienced in Antarctic navigation and have a great love of nature. We provide a specialist team of international expedition leaders and lecturers, all extremely knowledgeable, enthusiastic, helpful and dedicated to the protection of the environment. Our chefs prepare excellent cuisine including many local specialties and the bar is well-stocked with carefully selected wines and spirits.



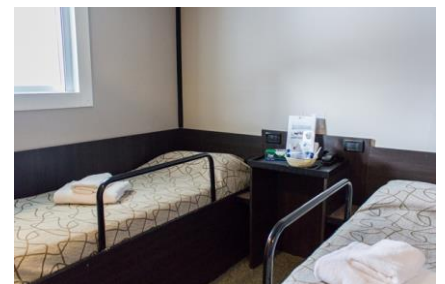
Accommodation:

- Suites:** 4 Outside cabins with windows on the upper deck G, private facilities, two lower berths, lounge, TV, DVD player and fridge. Suite 201 features two double beds, Suite 202 one double bed and a sofa bed. Suites 204 and 207 feature three lower single beds.
- Superior:** 9 Twin outside cabins with windows on the upper deck G, private facilities, two lower berths. Cabin 301 has one double and one single bed.
- Premier:** 6 Twin outside cabins with windows on the upper deck G, private facilities, two lower berths;
2 Single cabins with portholes (view obstructed by lifeboat) on the upper deck G, private facilities.
- Standard Plus:** 11 Twin outside cabins with portholes or windows on deck E, private facilities, two lower berths. Cabin 640 has one double bed.
2 Triple outside cabins with windows on deck E, private facilities, three lower berths.
- Standard:** 12 Twin outside cabins with portholes on deck E, semi-private facilities, two berths (upper/lower).

N.B. Semi-private facilities: Two cabins share one bathroom accessible from both cabins (shower and wc). Each cabin is also equipped with its own washbasin.



Superior



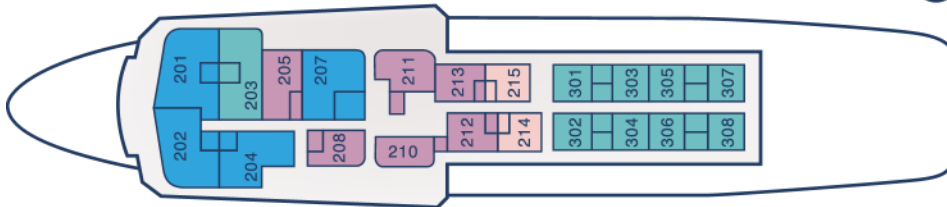
Standard Plus with window

DECK PLAN

BRIDGE DECK **H**

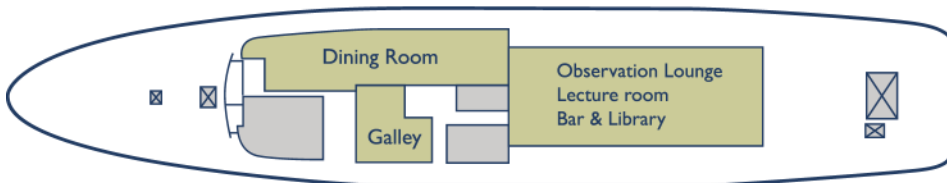


UPPER DECK **G**

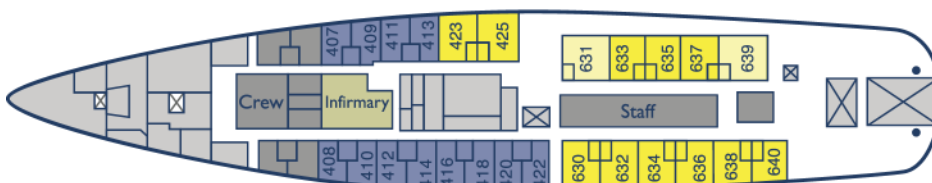


- 4 Suites
- 6 Premier twin private cabins
- 2 Premier single private cabins
- 9 Superior twin private cabins

MAIN DECK **F**



DECK **E**



- 12 Standard twin semi-private cabins
- 11 Standard Plus twin private cabins
- 2 Standard Plus triple private cabins



DATES & RATES 2024-25

Expedition cruises on board the **USHUAIA**. Port of embarkation and disembarkation: **Ushuaia, Argentina**

Voyage Code	Itinerary & Duration	Embarkation	Disembarkation
A131024	CLASSIC SOUTH GEORGIA Falkland Islands (Malvinas), South Georgia & Antarctica (21 nights/22 days)	October 13, 2024	November 03, 2024
A031124	CLASSIC ANTARCTICA Antarctic Peninsula & South Shetland Islands (9 nights/10 days)	November 03, 2024	November 12, 2024
A121124	CLASSIC ANTARCTICA Antarctic Peninsula & South Shetland Islands (10 nights/11 days)	November 12, 2024	November 22, 2024
A221124	CLASSIC ANTARCTICA Antarctic Peninsula & South Shetland Islands (9 nights/10 days)	November 22, 2024	December 01, 2024
A011224	CLASSIC ANTARCTICA Antarctic Peninsula & South Shetland Islands (9 nights/10 days)	December 01, 2024	December 10, 2024
A101224	CLASSIC ANTARCTICA Antarctic Peninsula & South Shetland Islands (10 nights/11 days)	December 10, 2024	December 20, 2024
A201224	CLASSIC ANTARCTICA Antarctic Peninsula & South Shetland Islands (9 nights/10 days)	December 20, 2024	December 29, 2024
A291224	CLASSIC ANTARCTICA Antarctic Peninsula & South Shetland Islands (10 nights/11 days)	December 29, 2024	January 08, 2025
A080125	CLASSIC ANTARCTICA Antarctic Peninsula & South Shetland Islands (10 nights/11 days)	January 08, 2025	January 18, 2025
A180125	CLASSIC ANTARCTICA Antarctic Peninsula & South Shetland Islands (9 nights/10 days)	January 18, 2025	January 27, 2025
A050225	WEDDELL SEA QUEST Antarctic Peninsula & South Shetland Islands (10 nights/11 days)	February 05, 2025	February 15, 2025
A150225	POLAR CIRCLE QUEST Antarctic Peninsula & South Shetland Islands (11 nights/12 days)	February 15, 2025	February 26, 2025
A260225	CLASSIC ANTARCTICA Antarctic Peninsula & South Shetland Islands (10 nights/11 days)	February 26, 2025	March 08, 2025
A080325	CLASSIC ANTARCTICA Antarctic Peninsula & South Shetland Islands (9 nights/10 days)	March 08, 2025	March 17, 2025
A170325	CLASSIC ANTARCTICA Antarctic Peninsula & South Shetland Islands (9 nights/10 days)	March 17, 2025	March 26, 2025
A260325	CLASSIC ANTARCTICA Antarctic Peninsula & South Shetland Islands (9 nights/10 days)	March 26, 2025	April 4, 2025



RATES 2024-25

All rates are quoted in US Dollars per person, based on twin or triple occupancy. Two dedicated Premier single cabins are available at a special single rate.

Special rates for families - A child (under 16 years) accompanied by two adults will be free of charge in a triple Superior cabin or triple Suite (see rates below).

Voyage:	Cabin Categories:						
	Standard Plus Triple	Standard Twin	Standard Plus Twin	Premier Twin	Premier Single	Superior Twin	Suite Twin
A131024 CLASSIC SOUTH GEORGIA Antarctic Peninsula & South Shetland Islands (21 nights/22 days)	9,990	10,990	14,130	16,800	20,180	17,770	18,670
A031124 CLASSIC ANTARCTICA Antarctic Peninsula & South Shetland Islands (9 nights/10 days)	4,860	5,210	6,640	7,890	9,470	8,350	8,780
A121124 & A101224 CLASSIC ANTARCTICA Antarctic Peninsula & South Shetland Islands (10 nights/11 days)	6,370	6,820	8,670	10,310	12,360	10,920	11,480
A221124, A011224, A080325, A170325 & A260325 CLASSIC ANTARCTICA Antarctic Peninsula & South Shetland Islands (9 nights/10 days)	5,730	6,140	7,800	9,280	11,120	9,830	10,330
A201224 & A180125 CLASSIC ANTARCTICA Antarctic Peninsula & South Shetland Islands (9 nights/10 days)	7,210	7,710	9,340	11,140	13,370	11,770	12,380
A291224 & A080125 CLASSIC ANTARCTICA Antarctic Peninsula & South Shetland Islands (10 nights/11 days)	7,990	8,570	10,380	12,380	14,860	13,080	13,750
A050225 WEDDELL SEA QUEST Antarctic Peninsula, South Shetland Islands & Weddell Sea (10 nights/11 days)	7,990	8,570	10,380	12,380	14,860	13,080	13,750
A150225 POLAR CIRCLE QUEST Antarctic Peninsula & South Shetland Islands (11 nights/12 days)	8,810	9,430	11,420	13,620	16,350	14,390	15,130
A260225 CLASSIC ANTARCTICA Antarctic Peninsula & South Shetland Islands (10 nights/11 days)	6,700	7,170	9,010	10,720	12,860	11,350	11,930

N.B. All rates are subject to change, especially possible fuel surcharges. However, there will be NO fuel surcharge for the 2024-25 season if the price of the barrel of crude oil is US\$100 or lower.

TERMS & CONDITIONS

Rates

All rates are quoted in US Dollars per person, based on twin or triple occupancy. Two dedicated Premier single cabins are available at a special single rate.

A limited number of twin cabins (except Suites) are available for single occupancy at 1.5 times the share rate. Suites may be reserved at 2 times the share rate. A third berth in the Suites and Superior #301 may be occupied at 50% of the published twin share rate.

Shared accommodation can be arranged on request.

All rates are subject to change and Antarply Expeditions reserves the right to modify the published rates without prior notice.

Included in the cruise price:

- Voyage aboard the USHUAIA as indicated in the itinerary.
- All meals throughout the voyage aboard the USHUAIA.
- All shore excursions and activities throughout the voyage by zodiac.
- Program of lectures by noted naturalists and leadership by experienced expedition staff.
- All miscellaneous service taxes and port charges throughout the program.
- Comprehensive pre-departure material.
- Detailed post-expedition log.

Not included in the cruise price:

Any airfare, whether on scheduled or charter flights; pre- and post land arrangements; transfers to / from the vessel; passport and visa expenses; Government arrival and departure taxes; meals ashore; baggage, cancellation and personal insurance (strongly recommended); excess baggage charges and all items of a personal nature such as bar and beverage charges and telecommunication charges; and the customary gratuity at the end of the voyages (guidelines will be provided).

Reservations and Payments

A deposit of 10% of the cruise fare is required per person to confirm reservations. A further deposit of 20% of the cruise fare is required 270 days prior to departure with final payment due 90 days prior to departure.

Cancellations

All requests for cancellations must be received in writing.

Cancellations received 90 days prior to departure are not refundable but may be used as future credit.

From 89 days up to and including the day of departure all deposits and tariffs are forfeited. If cancellation occurs within the 89 day period and full payment has not yet been received, the full penalty will still apply and unpaid monies are due immediately.

For these and other reasons mentioned below, you are strongly encouraged to obtain trip cancellation insurance.

Itineraries

The itineraries published are for reference only and are subject to change due to weather and ice conditions, or due to any other reason beyond our control, at the Master's and Expedition Leader's discretion without prior notice. Passengers have no right to any refund, any other consideration or claim whatsoever in the event of inevitable itinerary changes.

Insurance

Antarpply Expeditions requests their passengers to purchase a comprehensive travel insurance including trip cancellation and mandatory medical evacuation and repatriation coverage with a minimum of US\$100,000. Antarpply Expeditions shall not be responsible for any injuries to persons (whether or not resulting in death) or damage or loss to property. In case of a medical problem arising during the voyage, either on board or on shore, which results in costs for evacuation, use of aircraft or repatriation, the responsibility for payment of these costs belongs solely to the passenger and Antarpply Expeditions specifically decline any responsibility whatsoever (also if not covered by travel insurance).

Passenger Contract

The passenger must sign a passenger contract which constitutes the sole contract and his/her agreement to all the terms and conditions relative to the cruise. By accepting the cruise ticket the passenger also agrees to its terms & conditions.